



**PUROHIT PIPES
INDUSTRIES**



**PRODUCT
CATALOGUE**

**MANUFACTURER OF HANDLING AND REPAIRING OF PIPING PRODUCTS, POLLUTION CONTROL
EQUIPMENTS FABRICATION AND MACHINING OF ALL INDUSTRIAL COMPONENTS**

info@purohitpipes.com

ABOUT US

We would like to introduce Our self as **PUROHIT PIPES INDUSTRIES** is an ISO certified manufacturer of handling and repairing of Piping Products, Pollution Control Equipment's, Fabrication and Machining of All Industrial Components in Carbon Steel, Alloy Steel, Stainless Steel and Special Metals Used for Chemical Plants, Construction, Boiler Plants, Power Generation, Civil Contractors, Shipyard, Pharmacy, Petro-Chemical, Agriculture, Refinery Complexes, Oil & Gas & other various sectors all over the world.

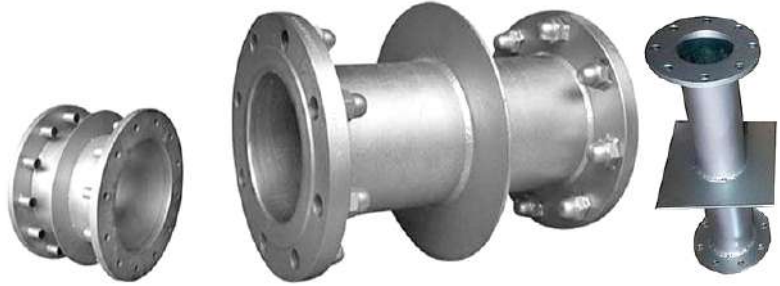
We owned state of the art manufacturing unit which is equipped with modern machinery and cutting edge technology. We manufacture our complete range there using superb quality raw materials. We are committed to offer best quality products to our esteemed clients. To ensure this, our competent quality maintenance cell tests our products on several scales. Our head office is at Mumbai. Our strongest asset is our highly experienced engineers and supporting staff, well equipped and ready to provide the fast and efficient service and ensure the successful execution of our projects and contracts.

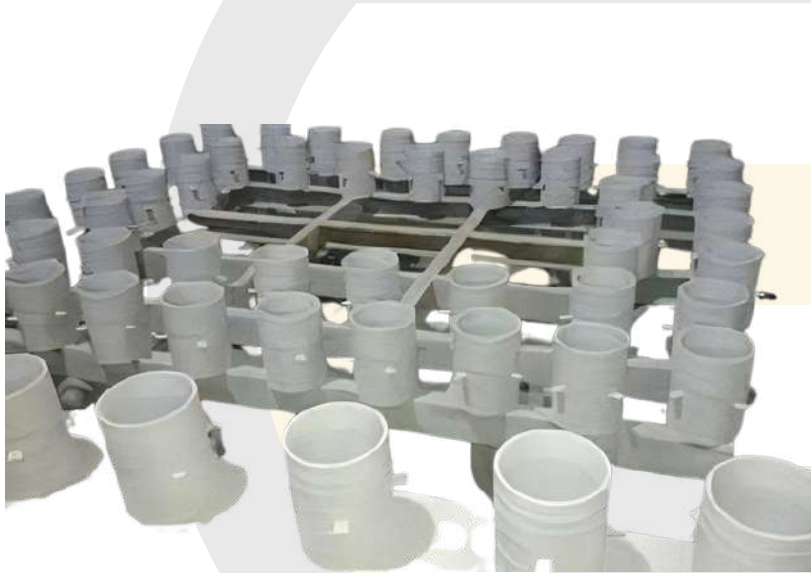
We can make the raw material into finished products and inspect the products before they leave factory. Additionally, we have the comprehensive capacity to manufacture UP TO **400 TO 500 METRIC TONNES PER MONTH**, in order to ensure product's quality, we have independent laboratories to make kinds of product testing, such as water pressure testing, penetration testing, radiographic testing, ultrasonic testing and products chemical composition testing.

In order to produce goods of international standards, we procure all our raw materials from approved stockiest. These materials are then again checked during the manufacturing process for physical & chemical properties, and also for precision and thread fittings by our quality control engineers. All goods produced, come with a manufacturing test certificate and guarantee certificate. Our material is regularly inspected & approved by various inspection Agencies like **EIL, Gulf Lloyds, Bureau Veritas, Tata Consultants, SGS, TUV, Bax Counsel, Velosi, TOYO, UDHE and Kvaerner**. Further we have tie up with Govt. approved laboratory to carry out immediate test for Chemical, Physical & other Supplementary Test required as per standard specifications. As we are maintaining bulk stock in every item, we can arrange supplies in time and that too at the most competitive rate.

OUR MISSION

Our mission is to supply Reliable quality at affordable cost to cater the needs of nation. Our Goal is to emerge as market leader by preserving the confidence of our valued customers. We shall endeavour to continually improve through group efforts.



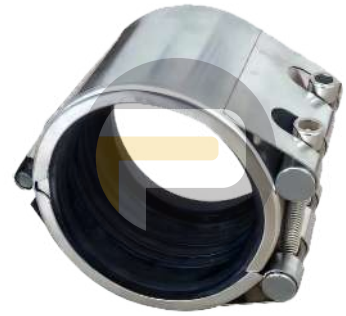


OUR PRODUCTS

PIPES REPAIR CLAMP

Pipe Repair Clamps is a product that is used to repair and seal a pipeline containing a leak. One of the fundamental aspects of a damaged/deteriorated pipe that dictates the type of repair component to be applied is the external pipe surface condition. This is a permanent method of repair. Locally corroded, damaged and cracked pipes can be repaired with this method. We design and manufacture of clamps for pipelines. The simplest form of repair component is a metallic patch which may be applied to cover a small, non-leaking defect. The repair involves the welding, by fillet welding to the pipe, of a suitably curved patch. The pipe walls in the weld regions, which are away from the defect area, must be of sufficient pipe thickness and must be defect free.

- **Body materials:** Stainless steel 304 / 316 material, ASTM A105, A216 WCB, A216 WCC, A352 LCC, A516 Gr.70 (Suitable for usually hurting affiliations)
- **Coating:** Yellow Epoxy Polyamide, standard or Marine epoxy
- **Size:** Standard replacement clamps: 4'–52" # 2500 # Temporary carbon steel acceptable.



PIPES SUPPORT CLAMP & HANGER

Pipe shoes can be manufactured to suit all pipe sizes and incorporate insulation, PTFE sliders, and a choice of lining material on the clamps. Sizes from 10 mm up to 2 meters have been manufactured to date.

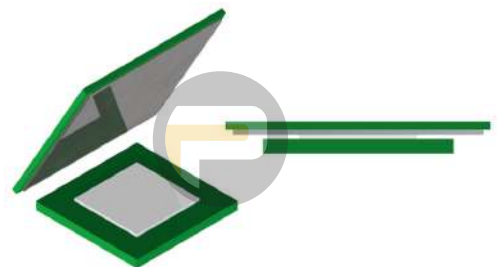
- **Available Grades:** SS304,316, E250 and coating hot dip galvanizing



PIPE SUPPORT SLIDE PLATE

Process piping systems rarely travel in a straight line from process to process. Modern processing systems are often a complex network of turns, elevation changes, fittings, and more. As with most piping considerations, understanding the ideal uses for bent pipe in your design or project is essential to the proper operation of the finished system. In this guide, we will look at why you might consider pipe bends in your system design and common considerations when searching for the perfect pipe bend.

- **Available grade:** Carbon Steel, With PTFE Sheet



PIPES END BEVEL PROTECTION CAP

The Reusable Bevel Protector provides the best protection during pipe transport, storage and handling of pipes, leaving the bevel free of damage. The strong clamping system is designed to withstand transport vibrations and all handling procedures. With the strong Clamping Clip, the same Bevel Protector can be reused.

In addition to protecting the bevelled edge, these caps can also help to prevent contaminants such as dust, dirt, and moisture from entering the pipe, which can help to ensure the integrity and quality of the line over the long haul.

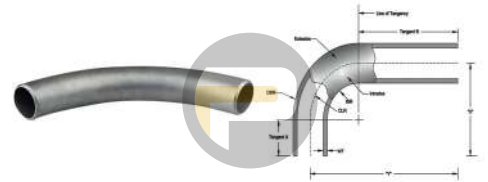
Material specifications Steel: E250, E250 GALVANIZED AND ANSI 304
Product Range: 200mm – 3048mm (8" - 120") and above



PIPES BEND

Process piping systems rarely travel in a straight line from process to process. Modern processing systems are often a complex network of turns, elevation changes, fittings, and more. As with most piping considerations, understanding the ideal uses for bent pipe in your design or project is essential to the proper operation of the finished system. In this guide, we will look at why you might consider pipe bends in your system design and common considerations when searching for the perfect pipe bend.

Available grade: Carbon Steel, Hastelloy, Monel, Inconel, Nickel alloy, Duplex, Super Duplex, Titanium and special grades
Bend: 1D, 1.5D, 2D, 3D, 4D, 5D, 6D



PIPES SPOOL

Pipe Spools, And By Extension Entire Pipeline Systems, Are Prone To Corrosion And Degradation. There Are Two Common Ways To Protect Pipelines Against Such Occurrences:

1. Applying A Protective Corrosion Resistant Coating, Such As An Epoxy Coating, During The Manufacturing Process.
2. Performing Routine Inspections With Pipeline Pigs To Check For Cracks And Corrosion While The Pipeline Is In Operation.

Pipe Spools Are Fabricated Using Raw Pipes And Pipe Fittings (flanges, Elbows, Tees, Etc.) The Raw Pipes Are Cut To Predetermined Sizes That Are Compatible With The Pipe Fittings And Other Components.

The Pipe Spooling Process Is Made Up Of Two Main Sections:

1. Roll Fitting And Welding
2. Permanent Position Fitting And Welding

Available Grades: Hastalloy, Cu-ni 90/10, cu-ni 70/30, Titanium, Hastelloy C 276, Monel, Super Duplex, Duplex, Inconel And Special Grades.

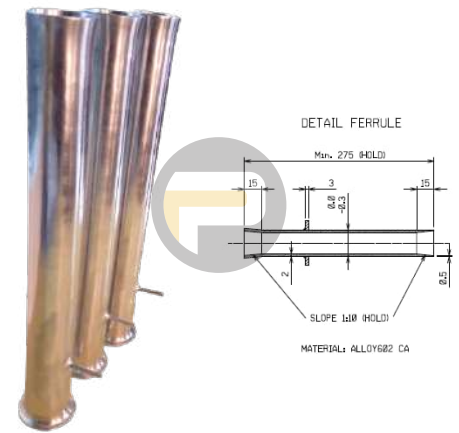


TUBE INSERT FERRULES

Tube inserts and Tube ferrules are a metal inserted into the end of a heat exchanger tube to provide protection to the Tube mouth ends of a shell & tube type heat exchanger. The need for this Tube Ferrule arises as all tube failures occur within the first few inches of the heat exchanger tube inlet-end. The solution to this situation is the use of a thin wall covering in form of metal tube insert expanded full length into the inlet-end of condensers and heat exchangers.

- 1) Protect inlet-end erosion & corrosion
- 2) Act as a protective layer
- 3) Reduce the medium impact
- 4) Transfer extremely high heat past the tube sheet to the exchanger tubes.

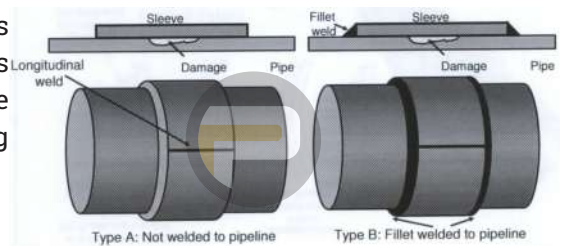
Available Grades: Hastalloy, Cu-Ni 90/10, Cu-Ni 70/30, Titanium, Hastelloy C 276, Monel, Duplex, Super Duplex, Inconel and Special Grades.



HALF REPAIR CLAMP

Immediate availability Built to exact pipe diameters for custom fit Material grades and thickness to application codes/requirements Restores host pipe to original & future expected service requirements Coatings for corrosion resistance Beyond repair, Weld On Sleeves can be used to cradle, support, reinforce or pad pipelines in above ground piping systems.

- Sizes from ½" NS to 60" NS and pressure range up to ANSI 2500
- Design life for 25 years with Galvalum III anodes
- Marine epoxy as standard or to the client's specification



SPLIT TEE

The shape of a barred tee is like a butt welding pipe tee with some bars in the branch of the tee. The bars are used for preventing the pig from running out in the branch of the main pipe. It is commonly used in a pigged pipeline, so it is also called pigged tee.

Benefits of a split tee:

- There are multiple benefits of using a split tee. Aside from the obvious, being able to tie into a line while it remains in service, a split tee is:
- Suitable for hot tapping activities and for installation of line stops. (Commercially, a line stop could be a Stopple which is installed in a line when a repair is necessary and the line cannot be taken out of service.)



- When done correctly, no potential for weld to penetrate tapping area. Though care needs to be taken not to penetrate the line that is being welded on. Welding burn through could cause the line to fail.
- Full bore split tees are available. Generally there is a full complement of reducing pipe size when using a split tee.

Available size: 4" to 80" With thickness up to 50mm



BARRED TEE

The shape of a barred tee is like a butt welding pipe tee with some bars in the branch of the tee. The bars are used for preventing the pig from running out in the branch of the main pipe. It is commonly used in a pigged pipeline, so it is also called pigged tee.

Available Grade: 4" to 80" With thickness up to 50mm

Grades: Carbon Steel, Alloy Steel



TAPPERED TUBE PLUGS

Tube Plugs or Tapered tube plug seal the ends of leaking tubes, providing longer use of the Condensers, Heat Exchangers, Boilers and Chillers. The uniform taper and the smooth surface finish assure positive sealing with minimum installation force. The one-piece design of the pin plug provides an easy solution to permanent plugging for tubes or tube sheet holes.

Available Size: 5mm to 125mm

Material: Carbon steel, Stainless Steel, Alloy Steel, Titanium, Brass, Copper, Aluminium, Bronze, Hastelloy, Monel, Inconel, Duplex and Super Duplex



DISH ENDS

Dished end manufacturing is a niche business within the fabricating industry but the call for the use of dished ends is numerous. Dished ends are the end caps welded to the main body of a pressure vessel. They are produced using a variety of production methods depending on the type of dished end required which will also need to reflect the characteristics of the end product. The cap starts off as a flat disc with the material being a suitable grade for the application required. The most common materials used are carbon steel and stainless steel but depending on the requirement, exotic materials and aluminium are used.

The Dished End Company produces all types of ends. They are manufactured from various steel types. The company also offers 2:1 semi ellipsoidal, hemispherical petals, torispherical ends as well as conical knuckled sections and special pressings.

Available Size: 10" to 80" with Thickness up to 65mm

Material Grade: Carbon Steel, Stainless Steel, Alloy Steel, Inconel, Monel, Hastelloy and Special grade.

Torispherical Head



ORIFICE FLANGES

The Orifice Flange is used to measure the flow of product through the piping system. When the Orifice Plate is installed there is a restriction of flow creating a differential pressure and this is used to measure the flow rate of liquids, steam or gases. The Orifice Plate is a thin plate with a centre bore that is determined by the desired flow rate.

Orifice Flange assemblies are available in all ASTM material Grades and fall under ASME B16.36 and are supplied with either a Raised Face or Ring Type Joint facing. They are not made in 150# rated Flanges because these Flanges are not thick enough to allow for the drilling of the pressure taps, but are supplied in the 300#, 600#, 900#, 1500# and 2500# Classes.

Available Size: 1" to 24"

Material Grade: Carbon Steel, Stainless Steel, Alloy Steel, Inconel, Monel, Hastelloy and Special grade.



SPECTACLE BLINDS AND SPACER RINGS

Spectacle Blinds are generally applied to permanently separating pipe systems, or just to connect with each other. A Spectacle Blind is a steel plate cut into two discs of a certain thickness. The two discs are attached to each other by section of steel similar to the nose piece of a pair of glasses. One of the discs is a solid plate, and the other is a ring, whose inside diameter is equal to that of a flange.

Ring Spacer

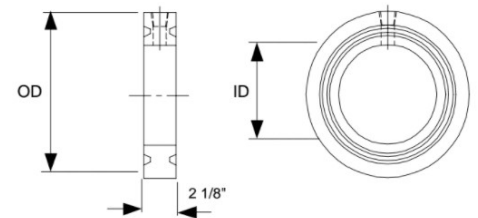
So as for the Spectacle Blind already described, maintenance on a pipe system can be a reason to temporarily replace a Ring Spacer for a Spade. By loosening of all bolts, and half of the bolts temporarily remove, the Spade or Spacer can be placed. After replacing the gaskets (new gaskets are to recommend), the bolts can be re-assembled and tightened.

A small problem is that we basically cannot see, or a Spade or a Spacer mounted between the flanges. Therefore, the handles are often specially marked, or both have a different design; a customer often provides its own specification. What should never lack is, that in the handle, the diameter and the Pressure Class of a Spade or Spacer is engraved; this applies also for the Spectacle Blind.

Dimension standard: ASME B16.48

Available Material: Carbon Steel

Material Grade: Carbon Steel, Stainless Steel, Alloy Steel, Inconel, Monel, Hastelloy and Special grade.



Ring Type Joint

SCUPPER BOX (BRIDGE DECK DRAINAGE)

Scupper boxes are components that manufacturers fabricate to provide water drainage from rooftops. The water may drain or run off through a wall or a metal edge. You may also know that scupper boxes are a type of overflow protection device that provides an extra drain for your roof.

Design

Items can be custom made to any profile, angle, material, or size.

Available Size: Copper, Galvanised Steel, Stainless Steel.



BAFFEL PLATE TUBE SHEET

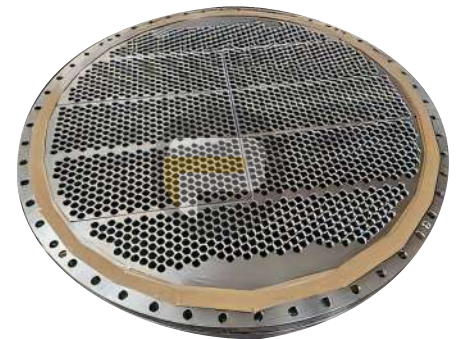
The tube sheet is one of the main components in a shell & tube heat exchanger.

Depending on the tube bundle configuration, a heat exchanger can be equipped with one or two tube sheets.

These are usually made of low carbon steel material, with a varying thickness based on the fluid pressure.

A tube sheet is usually made from a round flat piece of plate, sheet with holes drilled to accept the tubes or pipes in an accurate location and pattern relative to one another. The tube sheets are used to support and isolate tubes in heat exchangers and boilers or to support filter elements. Tubes are attached to the tube sheet by hydraulic pressure or by roller expansion. A tube sheet may be covered in a cladding material which serves as a corrosion barrier and insulator. Low carbon steel tube sheets can include a layer of a higher alloy metal bonded to the surface to provide more effective corrosion resistance without the expense of using the solid alloy, which means it can save a lot of cost.

Available Grades: Stainless Steel, Hastelloy, Titanium, Inconel, Monel, Duplex and Super Duplex.



AEROSPACE COMPONENTS

Aerospace component means the fabricated part, assembly of parts or completed unit of any aircraft, helicopter, missile, or space vehicle, including passenger safety equipment.



CNC COMPONENTS

CNC machining is a manufacturing process which utilizes computerized controls to operate and manipulate machine and cutting tools to shape stock material—e.g., metal, plastic, wood, foam, composite, etc.—into custom parts and designs. While the CNC machining process offers various capabilities and operations, the fundamental principles of the process remain largely the same throughout all of them.



MITER BEND

Miter bend are not standard pipe fittings they are fabricated from pipes. Usually, they are preferred for size 10" & above because large size elbow is expensive. Use of miter bend is restricted to the low-pressure water line. Miter bend can be fabricated in 2, 3, & 5 pieces. Miter bend is a bend is made by cutting pipe ends at an angle and joining the pipe ends. A true miter bend is a 90 degree bend made by cutting two pipes at 45 degrees and joining them by welding. Similarly three pipes cut at 22.5 degrees will give a 90 degree miter bend.

Available Grade: Carbon steel, Alloy steel, Stainless Steel



FORGE FITTINGS

Our factory is the first choice of Forged Stainless Steel Pipe Fittings and Forged Steel Pipe Fittings to meet your demand. We can provide a series of high-quality Forged Pipe Fittings, such as Socket Welded Pipe Fittings, Threaded Pipe Fittings, Elbow Fittings, High Pressure Fittings, 3000#,6000#, 9000# Pipe Couplings, Threaded Joints, Boss Pipe Fittings in various types. We also offer the value added services to our clients such as hot dip galvanizing.

Our entire range of forged stainless steel fittings, forged steel pipe fittings, and forged alloy steel pipe fittings are appreciated for high durability, dimensional accuracy, smooth finish, leak proof and corrosion resistant features.

Dimension standard : ASME B16.11, MSS-SP-79\83\95\97 and BS3799 standards

Material Grade: Carbon Steel, Hastalloy, Cu-Ni 90/10,Cu-Ni 70/30, Titanium, Hastelloy C 276 , Monel, Duplex, Super Duplex, Inconel and Special Grades.



FLANGES

Flanges are used to connect pipes with each other, to valves, to fittings, and to specialty items such as strainers and pressure vessels. A cover plate can be connected to create a "blind flange". Flanges are joined by bolting, and sealing is often completed with the use of gaskets or other methods.

Available Size: ½" to 48" Pressure Rating 150# to 2500#

Available Grades: Hastelloy, Cu-Ni 90/10, Cu-Ni 70/30, Titanium, Monel, Duplex, Super Duplex, Inconel and Special Grades.



FASTNERS

A fastener or fastening is a hardware device that mechanically joins or affixes two or more objects together. In general, fasteners are used to create non-permanent joints; that is, joints that can be removed or dismantled without damaging the joining components

Available Grades: Hastelloy, Cu-Ni 90/10, Cu-Ni 70/30, Titanium, Monel, Duplex, Super Duplex, Inconel and Special Grades.



FLANGE ROTARY AIRLOCK VALVE

Rotary airlock valves are also called rotary feeders, rotary valves, or just rotary airlocks. Used in both pressure style and vacuum style pneumatic conveying systems, these valves serve as a "lock" to prevent air loss while simultaneously performing vital material handling functions. Offset rotary valve is also known as side entry valve is designed to reduce breakage, crack age and shearing while handling the bulk of delicate materials like peanuts, coke, seeds etc. It consists of rotors, blades, offset inlet and flanges end connections. Rotors are available in several options such as adjustable blades, Teflon coated, scalloped pocket, edges etc.

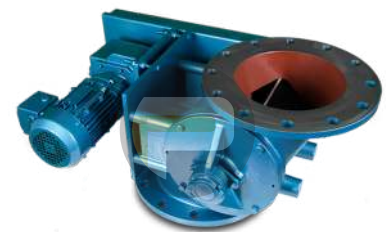
Sizes :- 150 mm to 1000 mm.

Material :- M.S., S.S., C.I., I.S. 4896.

Drives :- directly coupled, chain & sprocket driven, gearbox directly mounted etc.

Construction :- cast & fabricated body with adjustable rotor tips, shear protection, air purging, blow through type, side entry side discharge type.

Design Capacity :- 1 tph to 500 tph.



SLIDES GATE

Slide gates are used to control the discharge of bulk materials from hoppers, bins, silos or conveyors. Slide Gates consist of a rigid frame with a slide plate located inside that opens and closes against the flow of material. The slide plate can be actuated by manual, pneumatic, electric or hydraulic means.

The slide plate is supported by frictionless rollers to allow for easy actuation. The slide gate assembly utilizes bolted covers on both the top and bottom to create a dust-tight enclosure while allowing easy access for maintenance. Slide Gates are a great complement to our bulk material handling and processing equipment.

Size :- 200 X 200 mm to 1200 X 1200 mm

Material :- M.S., sail hard /hardox/SS 304 blade.

Construction :- stuffing box and gland arrangement S ARE provided around the flap for proper sealing

Actuation :- Manual, Rack & pinion, SCREW, PNEUMATIC by Single or double cylinder, Electric Geared Motor, hydraulic cylinder



DOUBLE DUMP VALVE

Double flap valves, also known as double dump valve, are a type of airtight valve. It is commonly used for bulk material handling in the industry to discharge solid, granular, powder or compact bulk materials from silo, bin, cyclone, and hopper operating under positive or negative pressure we offer double flap valve fabricated with best grade raw material. these are used as discharge valve below bag filter, silo where rotary air lock valve is not suitable. our range:

Size: 200 mm to any higher size

Temperature : upto 200 degree celsius

Type: manual counter weight / motorized m.o.c: m.s, s.s

Features: highest sealing efficiency due to machined mating surfaces.



GUILLOTINE DAMPER

Guillotine dampers are a type of single-bladed obstruction that can completely cut off the flow of a piping or venting system, allowing operators to safely inspect or maintain them as needed. a damper is a valve or plate that stops or regulates the flow of air inside a duct, chimney, vav box, air handler, or other air-handling equipment.

Low leakage slide gate isolation dampers are primarily used for isolation purposes where low levels of leakage and pressure drop are required. low leakage slide gate isolation dampers are available with chain drive and electric motor actuators.

Self cleaning stainless steel blade seals are incorporated around the full inside perimeter of the damper frame. the atmospheric blade seal is furnished along the face and edges of the damper blade to minimize leakage into or from the atmosphere.



SCREW CONVEYOR AND FEEDER

Screw feeders are designed to meter bulk materials and are typically located at the beginning of a process. Capacity or feed rate can be accurately controlled with screw feeders. Variable speed drives improve metering accuracy and can provide a wide range of feed rates Screw conveyors are used to convey bulk material from almost any position (vertical, horizontal, or at an incline) and are one of the most reliable methods of conveyance. The screw conveyor is composed of a pipe with a welded steel strip that is formed into a continuous helix.

Sizes:- 200 MM DIA TO 1250 MM.

Hanger bearings are provided for screw conveyor having conveying length more THAN 7 TO 8 meters.



DAMPERS

Dampers are devices that use adjustable blades to regulate the airflow from one side of the damper to the other, which may be located within ductwork, between rooms, or between the outside and inside of a building. Dampers are a lot more than simple airflow adjusters.

Material :- Stainless steel dampers for high temperature applications and are available in a variety of sizes.

Various sealing arrangements can be used to provide the correct efficiency for your application.

Actuation :- pneumatically, electrically or manually or reduction gearbox.



DOUBLE CONE VALVE

Selection of Cone or Flap depends on the characteristics of material to be handled and system requirement like pressure sealing. Cone valve has a better sealing than the flap valve. However, in smaller size valves, the cone can act as an obstruction in the flow resulting in clogging of the small opening. The cone valves usually have round opening whereas the flap valves can have square.

Double Flap/Cone Valves are used for extracting bulk material from collection vessels which are maintained at a pressure different than the outside. Typical locations include below ESP hoppers & Bag House hoppers etc., where the dust collection chambers are at a negative pressure. The valves can handle fine dusty or grainy material like cement, crushed ore, sugar, minerals, grains, plastics, dust, fly ash, flour, gypsum, lime, coffee, cereals, pharmaceuticals etc.

Material :- m.s, 400 hardox, 500 hardox and stainless steel.

Whether you are handling fine, granular, lumpy, abrasive, or corrosive products, ase let you choose the construction materials best suited to fit your budget requirements and handling needs. Double cone valves are VARYING durable.



KNIFE GATE VALVE

Knife gate valves are designed mainly for on-off and isolation services in systems with high content of suspended solids. knife gate valves are especially beneficial for handling slurry in addition to viscous, corrosive and abrasive media.

We offer a wide range of knife gate valves for handling diversion application in water, waste water, bulk handling, cement, sugar, pulp & paper & other process industries.

- Ase valve are produced from quality assured raw material.
- The design & quality assurance system ensures that each valve leaves the factory with the promise of trouble free operation.
- Ase offers a range of valve operation like hand wheel, pneumatic cylinder,



gear box, electric actuators etc. with accessories like limit switches & solenoid valve.

- Ase valve are available in cast iron & many varieties of stainless steel with drilling standard like ansi/bs/din.
- Ase standard range from 80 mm – 1000 mm are available.
- Ase will also supply as per cusmoer design

CHAIN CONVEYOR

Chain conveyors are used for moving products down an assembly line and/or around a manufacturing or warehousing facility. Chain conveyors are primarily used to transport heavy unit loads, e.g. pallets, grid boxes, and industrial containers. These conveyors can be single or double chain strand in configuration.



COFFE-POT DAMPER

Motorised Coffee Pot Damper is tailor made equipment used in mainly Hot Air Generator to inject cold air whenever want to reduce gas temp. or also used to take fresh air in system. These Dampers are operated by Electrical Linear Actuator.

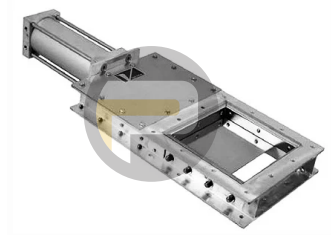
These dampers are operated with "Electrical Linear Actuator". The damper will get open instantly in the event of an emergency with the help of counter weight & electro – magnet.

Available in range – 500 mm Dia / SQ to 8500 mm Dia / SQ Leak tightness – 98% ACA to 99.9% ACA Material of construction – MO is the subject of the pressure, temp, medium or medium handled Duty – On-Off / Regulating



SHUTT – OFF GATES

Shut-off valves are commonly used in residential plumbing, whereas gate valves are primarily seen in commercial and industrial settings. Shut-off valves stop water flow in a straight line and are easy to operate. They have a small handle that you can turn to stop the water flow. Shut-off valves come in different materials, such as brass, chrome, and plastic, but the most common type is the quarter-turn ball valve. These valves are reliable and long lasting, making them a preferred choice among homeowners.



OTHERS PRODUCTS

- ▶ PIPES
- ▶ PLATES
- ▶ PIPE FITTINGS
- ▶ GASKETS
- ▶ EXPANSION BELLOWS
- ▶ WELDING ROD
- ▶ COMPRESSION FITTINGS
- ▶ HYDRALIC PIPES AND FITTINGS
- ▶ HOSE NIPPLES
- ▶ STRUCTURAL
- ▶ VALVE
- ▶ INDUSTRIAL TOOLS AND SAFETY EQUIPMENTS

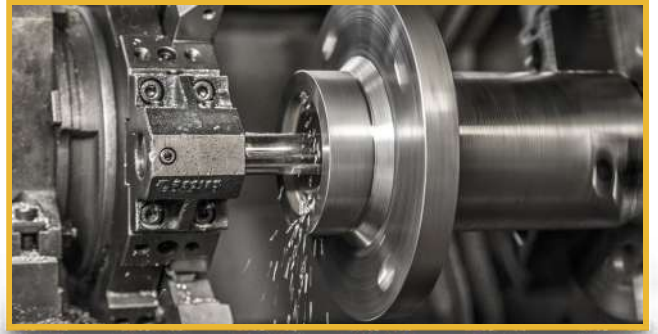
ON SITE SERVICES

- ▶ REPAIRING & MAINTENANCE
- ▶ CUTTING & GRINDING
- ▶ PACKING
- ▶ FABRICATION & MACHINING





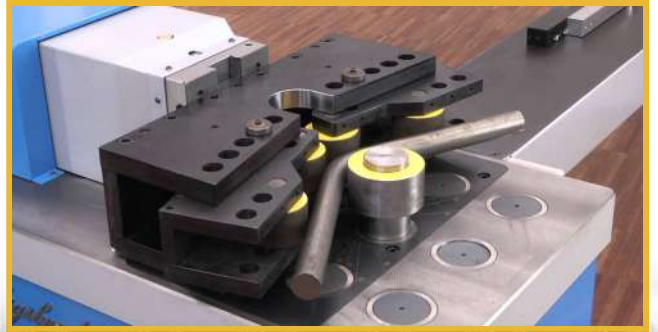
CNC



LATHE



PRESS



BENDING



ROLLING



LASER CUT



DRILING

INDUSTRIES WE SERVE

- ▶ Chemical Plants
- ▶ Construction
- ▶ Boiler Plants
- ▶ Power Generation
- ▶ Civil Contractors
- ▶ Oil & Gas & Other Various Sectors All Over The World.
- ▶ Shipyard
- ▶ Pharmacy
- ▶ Petro-chemical
- ▶ Agriculture
- ▶ Refinery Complexes



PUROHIT PIPES INDUSTRIES

📍 23, 2nd Floor, 56 Dayabhai Building, Kika Street, Mumbai - 400 004.

Factory: No4, Raghukul Mhatre Compound, Sonarpada, MIDC Dombivli East 421204.

✉ info@purohitpipes.com

🌐 www.purohitfitting.com | www.purohitpipes.com

📞 022 6610 9825

📞 +91 9769256593